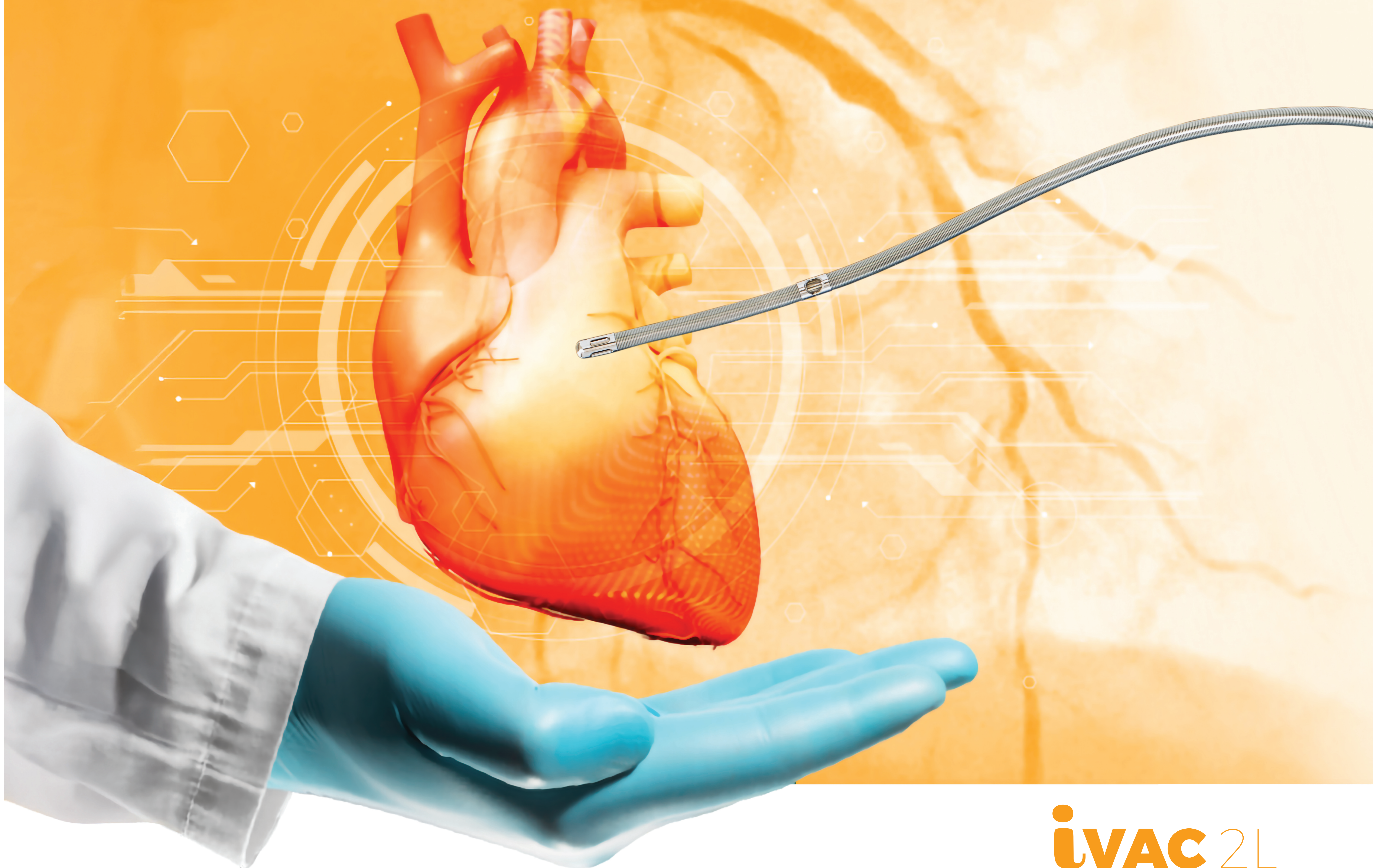


# NATURAL PULSATILE SUPPORT

for protected  
high-risk pci

PULSE CATH



**iVAC** 2L

## FEATURES & BENEFITS



**Fast and easy  
percutaneous  
implementation**



**Pulsatile support  
for better LV  
unloading**



**Ejects LV blood  
into the aorta  
up to 2.0 L/min,  
boosting cardiac  
output**



## **FEATURES & BENEFITS**



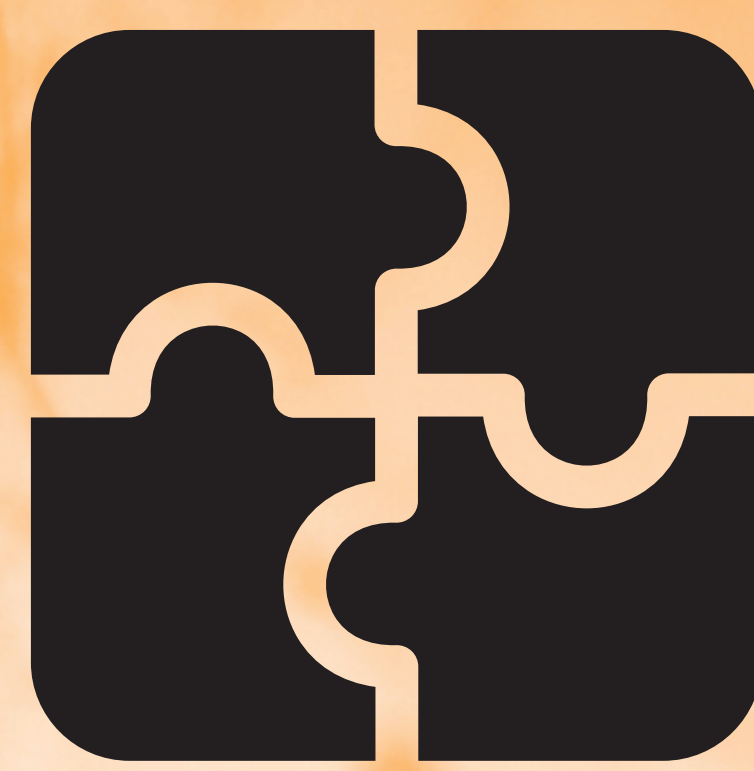
**iVAC 2L boosts mean arterial pressure via diastolic augmentation, enhancing coronary flow**



**Highly flexible and durable catheter**



**Real life experience shows benefits of using iVAC 2L in a supra-aortic position**



**Cost effectiveness: design that fully integrates with a standard IABP console**