



Teleflex AutoCAT2Wave Basic settings



Pre-check for ALL pumps: Helium level more than 1/3rd, ECG electrodes connected to patient, IABP connected to power source and charging.

Insert the 50cc ORANGE adaptor provided by PULSECATH in the balloon connector

To set the IABP driver in INTERNAL mode: select INT in TRIGGER MODE and remove the ECG cable from the IABP driver. Reconnect the ECG cable when returning to the ECG or AP trigger mode.



1. Set **MODE** to **OPERATOR**.

2. Set the **TRIGGER** at **PATTERN, AP** or **Internal mode** (Internal mode should always be used for uncontrolled atrial fibrillation, bradycardia <60bpm or tachycardia >95bpm).

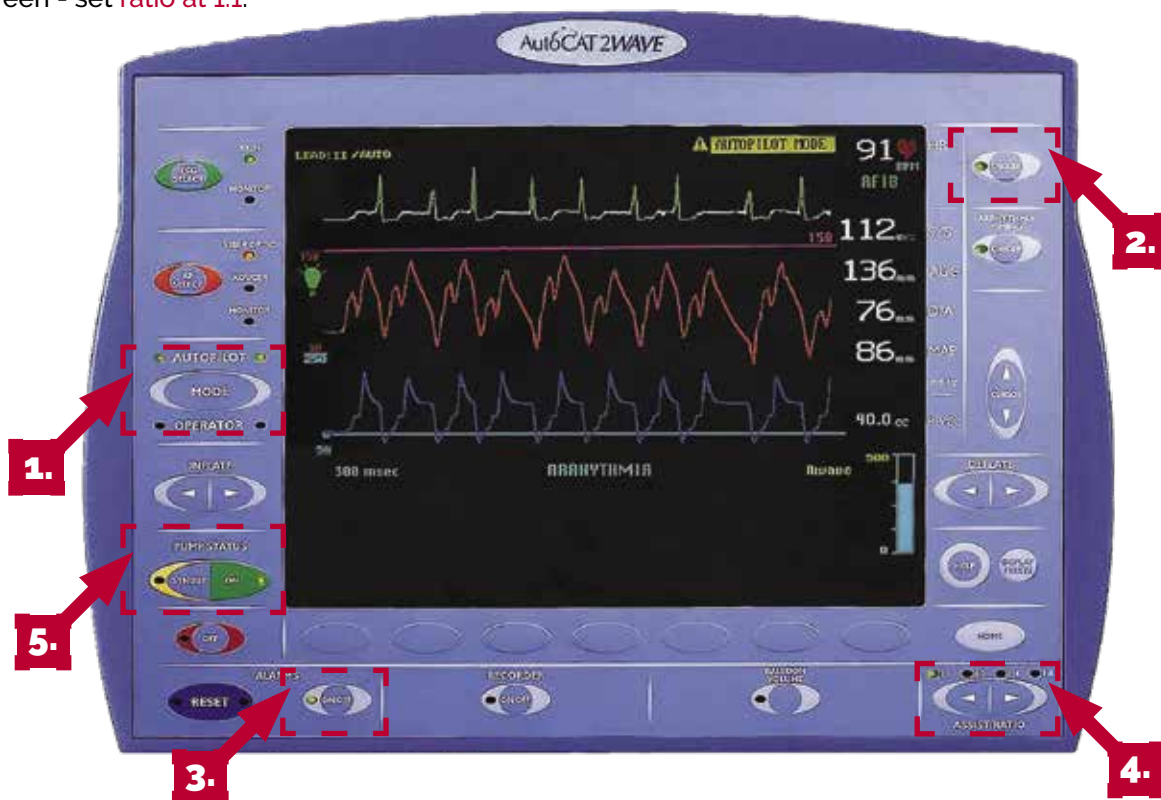
3. Press **ALARM ON/OFF** button. Select **60min** and confirm with soft button below the screen.

4. Set **ASSIST RATIO** to **1:2**. After the iVAC 2L is connected, observe for smooth movement of the membrane and the correct curve on the IABP screen - set **ratio** at **1:1**.

5. To start the pump, press the **ON** button, to stop the pump press **STANDBY** button and use **RESET** to silence **ALARMS**.

To set the IABP driver in INTERNAL mode: Press the TRIGGER button – at the bottom of the screen select INTERNAL and confirm with soft button below the screen. Rate can be adjusted as indicated on screen. Remove the ECG cable from the IABP driver. Reconnect the ECG cable when returning to the ECG or AP trigger mode.

Special notice: RESET the alarms every 60 minutes to avoid ALARMS



Trouble shooting:

- Persistent alarms – check IABP settings and ECG cable (in for ECG and out for Internal)
- Multiple PVC's – Change mode to internal mode and change rate to match patient's heart rate
- Remove Membrane pump connector and reinsert (back of the pump)
- If alarms are persistent after trouble shooting – RESTART PUMP